

CLEGGFORD BRIDGE

SCOUR PROTECTION WORKS

Date works carried
out

August 2010

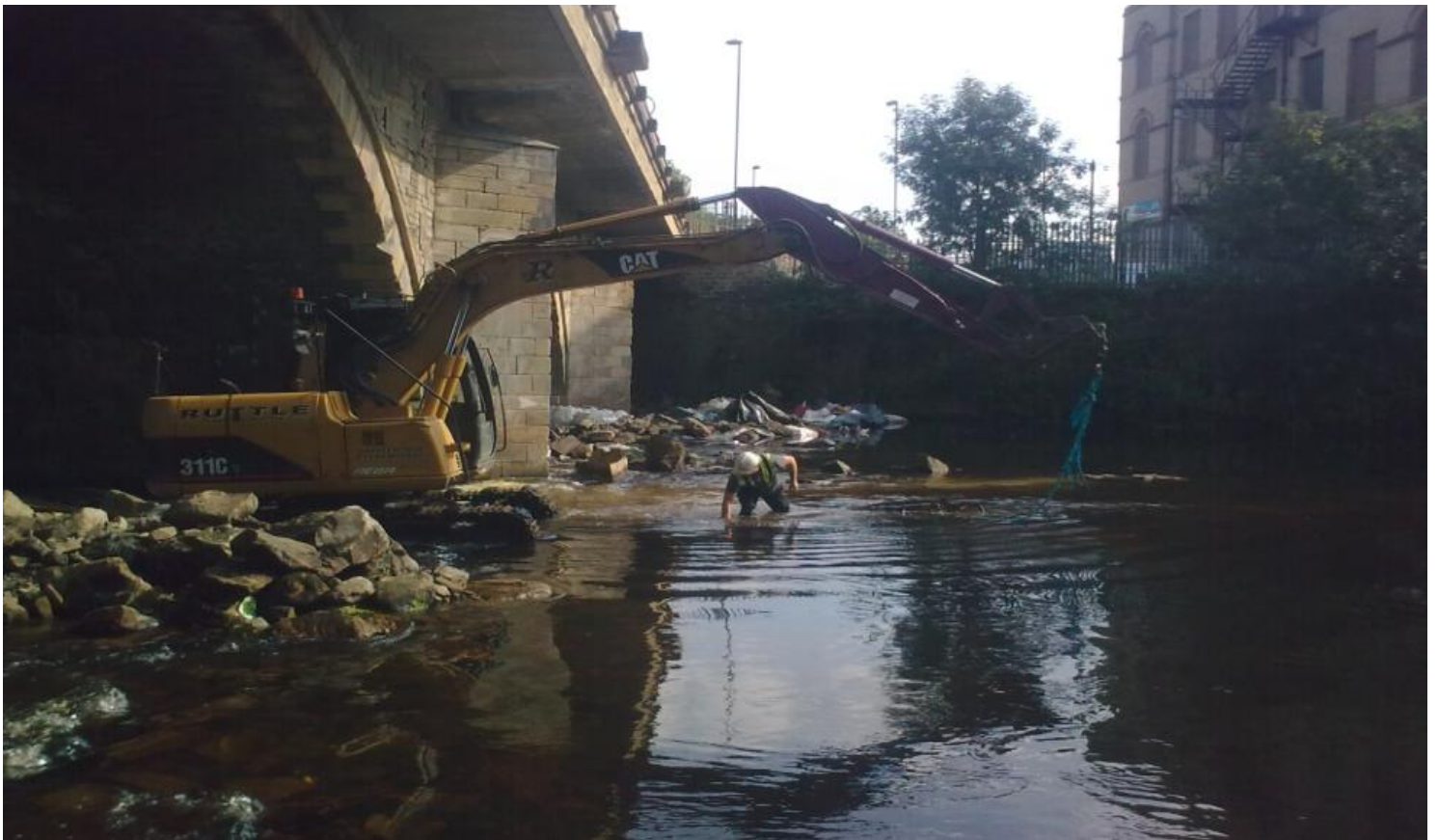
Duration

5 weeks

Contract Value

£65,000

This project involved the installation of scour protection to the foundations of the five existing piers of the bridge following recent restoration and essential strengthening works



The aim of this project was to add protection to the existing bridge pier foundations to prevent failure as a result of scour from the fast flowing water and to ultimately elongate the life span of the structure. This was achieved by damming isolated areas and creating a dry zone around each individual pier. A reinforced concrete surround was then installed to prevent future scour (see photos, right).

Finally the river profile was reformed and the banks shaped to complete the scheme.

The existing waterway is fast flowing and approximately one meter deep, and as such presents a challenging environment to work in, both in terms of health and safety and environmental conservation.

Our team was successful in enabling a safe working environment whilst limiting its impact on the delicate ecosystem thanks to our close involvement with the Environment Agency

